



# Ethics & Boundaries in Peer work

AMBROSIA EBERHARDT

# Ethics & Boundaries

## Ethics

- **“The rules or standards governing the conduct of a person or the members of a profession.” The free dictionary**

## Boundaries

- ▶ **“Unofficial rules about what should not be done : limits that define acceptable behavior. “ Merriam Webster**

This video has some great info even though it is geared toward counselors.

How to Create  
Healthy Boundaries  
To Improve Relationships



## Sometimes we don't know until we know

In this PA work new situations will continue to arise where we will have to figure out our own personal boundaries. Some of the work we do professionally might have automatic boundaries that come built in with our job requirements. Sometimes our personal and professional boundaries may differ.

This exercise isn't intended to teach you what you "should" do in these potential conflicts, but rather get us revisiting and thinking where our boundaries are.

Boundary exercise.....count into groups and have people work on scenarios.

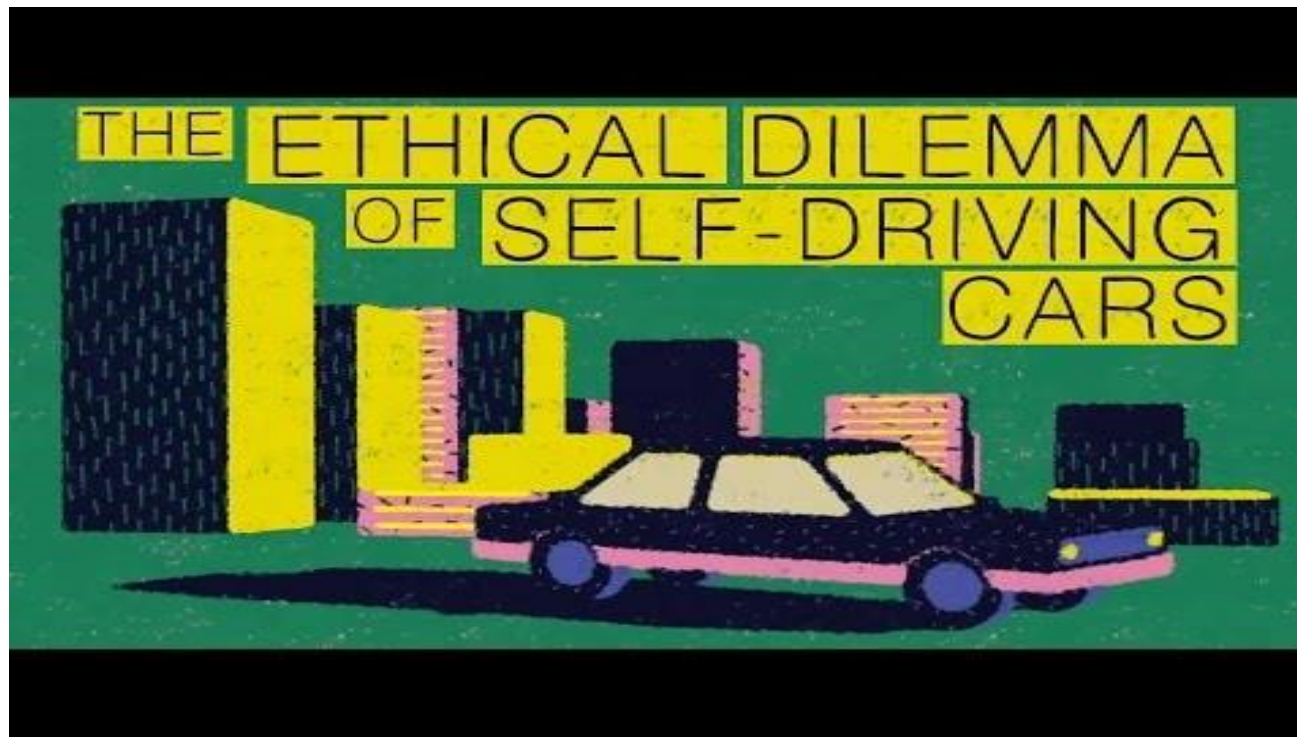
### What would you do?

**1.-**Your kid has a friend stay the night. Later you discover they are CPS involved and you work with their family in another venue. What boundaries personally might you want to set? What conflicts could you imagine coming up personally and professionally? Explain.

**2-** A family you are working with gives you a homemade tin of cookies. What would you do? Now imagine if they offered you a used cell phone they heard you needed. What if it was a gift certificate they won and didn't want? Where do your boundaries fall in these situations personally?

**3-** Imagine you are in recovery, and sponsoring someone. They become CPS involved and you also work with that population either professionally or as a volunteer. What conflicts might arise and where would you draw your boundaries.

To get us thinking about the extreme.....





Ethical dilemmas will continue to arise and we will inevitably make some mistakes along the way. We have already learned some things as we navigated through this PA work. Things like relapse protocol were birthed from these kind of bumps in the road.

Like I mentioned before with the boundaries, my intent with this is to get us talking about things as they occur and seeking guidance when needed.

**1.** You work for an agency that serves a CPS involved population. You also are involved in a celebrate recovery ministry . Part of that program is serving. You choose to volunteer in the nursely. What ethical dilemmas could you foresee coming up?

**2.** You are working or volunteering with a family that threatens suicide, what would you do? What if they instead threatened to harm others?

**3.** A parent you work with confides a secret to you. They used and don't want anyone to know. What would you do? What if the secret was bigger and you might have to call CPS, how would you handle that?